

華

hana

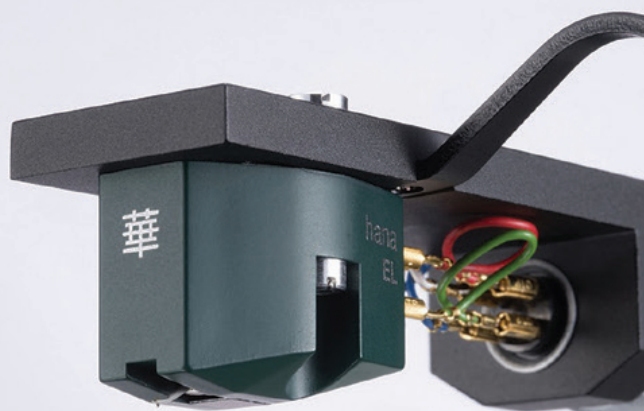


Brilliant &
Gorgeous

GVR 
audio import
www.gvraudio.eu

handmade in Japan

EL



The Hana EL provides high-end musical performance from a low-output moving coil cartridge at an extremely attractive price. Handmade in Japan, the EL uses ALNICO magnets and affords the listener the textural, imaging, and musically involving qualities associated with the best MC cartridges.

Long prized by audiophiles and music lovers, this affordable low output MC is a perfect match for today's MC phono stages.

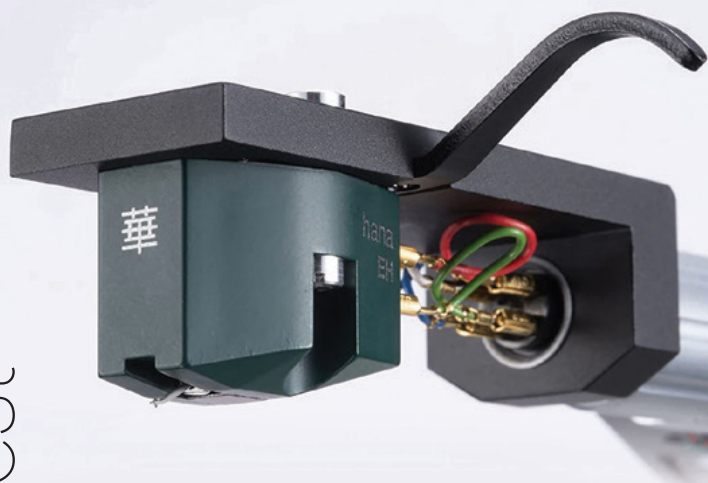
RRP	€ 449,00
Stylus	Synthetic Elliptical
Cantilever	Aluminium
Output Level	0.5mv/1KHz
Output Balance	<2dB/1 KHz
Vertical Tracking Force	2g
Trackability	70 µm/2g
Channel Separation	25dB/1KHz
Frequency Response	15-25,000Hz
Impedance	30Ω/1KHz
Suggested Load Impedance	>400Ω
Cartridge Weight	5g
Body Color	Moss Green
Warranty	2 years

next best

EH

The Hana EH high-output moving coil cartridge represents the best way to upgrade from “starter” MM cartridges that typically come packaged with most entry-level turntables.

Weighing in at only 5 grams, and possessing great tracking ability, the Hana EH cartridge’s distinctive moss green body houses a special cross-coil generator, reproducing great bass and dynamics.



RRP	€ 449,00
Stylus	Synthetic Elliptical
Cantilever	Aluminium
Output Level	2mv/1KHz
Output Balance	<2dB/1 KHz
Vertical Tracking Force	2g
Trackability	70 µm/2g
Channel Separation	25dB/1KHz
Frequency Response	15-25,000Hz
Impedance	130Ω/1KHz
Suggested Load Impedance	>47kΩ
Cartridge Weight	5g
Body Color	Moss Green
Warranty	2 years

Excel Sound

Hana's best-selling low output MC, has won Hi-Fi awards around the world and offers a supreme sound quality price ratio.

Rocky Mountain
International HiFi Press
Award winner
2018 and 2019.

RRP	€ 649,00
Stylus	Shibata Diamond
Cantilever	Aluminium
Output Level	0.5mv/1KHz
Output Balance	<1.5dB/1 KHz
Vertical Tracking Force	2g
Trackability	70 µm/2g
Channel Separation	28dB/1KHz
Frequency Response	15-32,000Hz
Impedance	30Ω/1KHz
Suggested Load Impedance	>400Ω
Cartridge Weight	5g
Body Color	Black
Warranty	2 years



SL

The Hana SH combines high output with high resolution, courtesy of its special coil design and Shibata stylus.

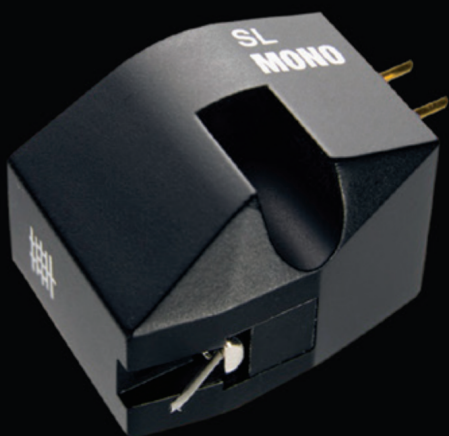
Compatible with standard MM phono stages, a high-output MC provides dynamics, drive, and excellent stereo imaging.

SH

RRP	€ 649,00
Stylus	Shibata Diamond
Cantilever	Aluminium
Output Level	2mv/1KHz
Output Balance	<1.5dB/1 KHz
Vertical Tracking Force	2g
Trackability	70 µm/2g
Channel Separation	28dB/1KHz
Frequency Response	15-32,000Hz
Impedance	130Ω/1KHz
Suggested Load Impedance	47kΩ
Cartridge Weight	5g
Body Color	Black
Warranty	2 years

high performance

involving & refined



SL-mono

The Hana SL Mono represents the most musical and affordable means to enjoy both the classic records of that era as well as today's mono re-issues.

Embodying the highly acclaimed sound of the Hana SL, the SL Mono, with its special generator and Shibata stylus, optimises playback of mono LPs. Whether mounted to a second tonearm, Universal headshell, or dedicated mono turntable, the SL Mono lets you get the most from all great mono recordings.

RRP	€ 649,00
Stylus	Shibata Diamond
Stylus Shape	0.27 × 1.57mil
Cantilever	Aluminium
Output Level	0.4mv/1KHz
Vertical Tracking Force	2g
Trackability	70 µm/2g
Channel Separation	28dB/1KHz
Frequency Response	15-32,000Hz
Impedance	23Ω/1KHz
Suggested Load Impedance	>200Ω
Cartridge Weight	5g
Body Color	Black
Warranty	2 years

affordable perfection

ML

Befitting its name, the M Series uses a Nude Microline stylus, mimicking the cutting stylus and fitting more precisely into the vinyl groove.

Capture the most delicate musical details with better frequency reproduction, stereo imaging, and resolution.

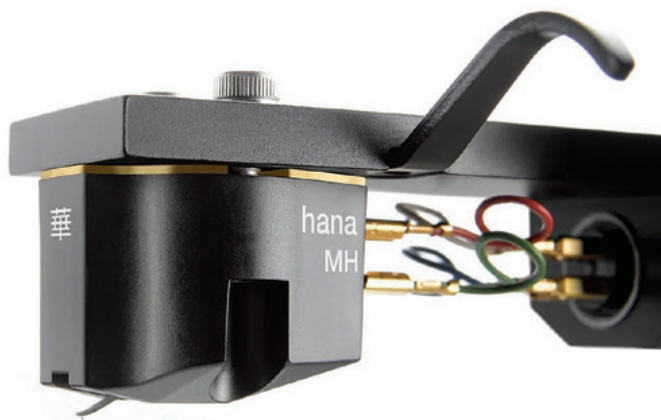


RRP	€ 1.149,00
Stylus	Microline Diamond
Cantilever	Aluminium
Magnetic Circuitry	Pure Iron/Cryo Treatment
Coil Wire	High Purity Copper
Cartridge Housing	POM (Delrin) / Brass
Output Level	0.4mv/1KHz
Output Balance	<1dB/1 KHz
Trackability	70 μ m/2g
Channel Separation	30dB/1KHz
Frequency Response	12-45,000Hz
Impedance	8 Ω /1KHz
SUGG Load Impedance	>100 Ω
Magnet	Alnico
Vertical Tracking Force	2g
Cartridge Weight	9.5g
Height	16.3mm
Body Color	Black w/Gold Plate
Warranty	2 years

stellar performance

MH

One of the world's best High Output Moving Coil cartridges, the MH combines the technological advances of the Hana M Series with the optimal interface for moving magnet phono stages.



RRP	€ 1.149,00
Stylus	Microline Diamond
Cantilever	Aluminium
Magnetic Circuitry	Pure Iron/Cryo Treatment
Coil Wire	High Purity Copper
Cartridge Housing	POM (Delrin) / Brass
Output Level	2mv/1KHz
Output Balance	<1dB/1 KHz
Trackability	70 µm/2g
Channel Separation	30dB/1KHz
Frequency Response	12-45,000Hz
Impedance	130Ω/1KHz
Suggested Load Impedance	47kΩ
Magnet	Alnico
Vertical Tracking Force	2g
Cartridge Weight	9.5g
Height	16.3mm
Body Color	Black w/Gold Plate
Warranty	2 years



sublime
enjoyment

Umami Blue

The HANA-Umami Blue high-end moving coil cartridge combines the vision of Master cartridge designer Okada-san with the history of special materials, classic Japanese techniques, and modern audio engineering.

This synergistic relationship in MC cartridge design between specific materials, unique body design, a sophisticated generator, and hand-built precision is the critical aspect for outstanding cartridge performance.

The **Auricle™** body design, unique and exclusive to our Umami series, is CNC machined from Duralumin. Sharing key Umami Red ingredients, including the precision-cut diamond stylus, Boron cantilever, and high-purity copper wires, then combining these with the Alnico magnet based generator found in the famous Hana ML, creates the exceptionally musical Umami Blue.



The HANA-Umami Blue uses a special **Melamine Thermosetting Process (MTP)** to impart the brilliant blue glossy finish to the Auricle™ body. Originally developed by Dupont, the Melamine Thermosetting Process contributes to the rich sound with increased clarity, better imaging, and bass definition.

Full specification and price, see page 10.

Moving Coil Cartridge Specification

(230101) (*)

		Umami Blue	Umami Red	
	RRP	€ 2.499,00	€ 3.699,00	
Body	Material	Duralumin (A7075)	Duralumin (A7075), Ebony Wood Inlay	
	Finish	Melamine Thermosetting Process (MTP)	Gloss Urushi Lacquer/ Red	
Cantilever Assy	Cantilever	Boron	Boron	
	Stylus	Microline Nude Diamond	Microline Nude Diamond	
Magnetic Circuit	Armature material	Permalloy	Permalloy	
	Amature Shape	Cross Plate	Square	
	Parts material	Pure Iron	Pure Iron	
	Magnet	Alnico (Al-Ni-Co)	Samarium Cobalt	
	Output Pins	24K Gold Plated	24K Gold Plated	
Coil	Coil impedance	8Ω	6Ω/1KHz	
	Output	0.4mV	0.4mv/1KHz	
	Coil Wire Material	High Purity Copper	High Purity Copper	
	Load impedance	>80Ω	> 60Ω	
Treatment	Cryogenic	Front York,Rear Yoke,Pole Piece,Terminal Pins		
SPEC	Frequency Response	15-50,000Hz	15-50,000Hz	
	Output Balance	0.5dB/1KHz	0.5dB/1KHz	
	Channel Separation	30dB/1KHz	30dB/1KHz	
	Tracking Weight	2g	2g	
	Trackability	70μm/2g	70μm/2g	
	Dynamic Compliance		10×10(-6)cm/dyne(10Hz)	10 × 10(-6) cm/dyne(100Hz)
			Estimated at 17×10(-6)cm/dyne at 10Hz	17 × 10(-6) cm/dyne(10Hz)
	Cartridge Weight	10.8g	10.5g	

(*) Specification is subject to further possible change.



Umami Red

The synergistic relationship in MC generators between magnet, armature, and coil windings is a critical aspect of outstanding cartridge design; and like a signature dish at a Michelin 3-star restaurant, every element and detail working in concert results in a memorable and emotional experience.

Full specification and price, see page 10.

Ebony wood, rare-earth magnets, precision-cut diamond, high-purity copper wires, Urushi lacquering, and CNC machined Duralumin synergise under the vision of Hana designer Okada-san.

華

Find your nearest dealer:

www.hanacartridges.eu



All prices shown are full suggested selling price
(subject to change without notification).

Warranty: 2 years, on materials and manufacture faults.

Final decision on warranty lies with Excel Sound (Hana manufacturer)
after inspection of returned cartridge to factory laboratory.

GVR 
audio import
www.gvraudio.eu